



SOFT GLASS FIBER

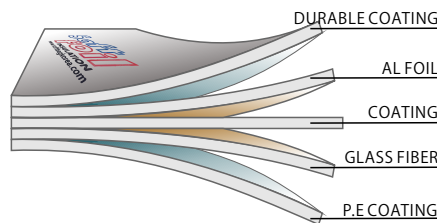
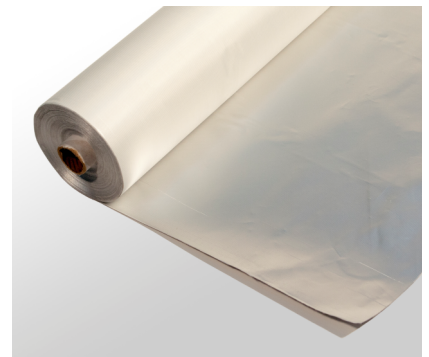
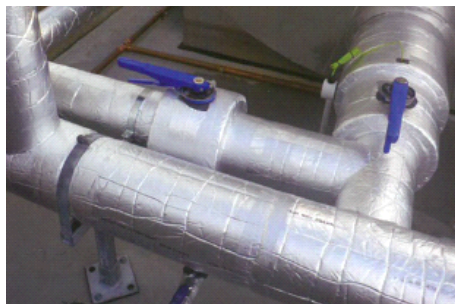
LIGHT DUTY SF-5003

PRODUCT INFORMATION

Soft-Glass fiber(No-clad) is designed as a cost effective alternative to cladding of pipe and duct insulation to prevent mechanical damage. It differs from standard Soft-Glass fiber in that the aluminium foil is a puncture resistant multilayer.

- A salt water resistant, UV and weather durable coating.
- The aluminium foil is reinforced with a ultra coating, twill weave of glass fiber.

Although designed to be resistant to mechanical damage, Soft-Glass fiber has been designed for easy fabrication using sharp knives.



click to
MSDS

SOFT GLASS FIBER LIGHT DUTY SF-5003



SOFTBAG KOREA CO.,LTD.

6FL, Shingang Bldg,
67, Seongsui-ro,
Seongdong-gu,
Seoul, KOREA
Tel. 82-2-462-1401
Fax. 82-2-462-1402

Email: kenny@softbagkorea.com

click to
Contact us

PHYSICAL CHARACTERISTICS

Description	Parameter	Test Method
Tensile strength Machine Direction	>56 KN/5cm	ASTM D4595
Tensile strength Lateral Direction	>45 KN/5cm	
Edge Tear Resistance Machine Direction	>60N	TAPPI T470
Edge Tear Resistance Lateral Direction	>60N	
UV & Weathering (3000 hr QUV exposure)	Excellent	ISO 4892-3
Salt resistance (2week immersion in 5% salt solution)	No visible change	
Water vapour permeability	High	ASTM E96
Water vapour permeance 12mm thickness	High	
Resistance to fungi	Zero Growth	ASTM G21
Ozone resistance	Excellent	
Operating temperature	-80°C to 100°C	
Fire and smoke behavior	Class 0	BS 476 Part 6&7
Ignitability index	0	AS 1530.3
Smoke develop index	0-1	AS 1530.3
Width : 1250mm		
Weight : 190GSM		